

# MORTAL FOOLS



Department for Culture, Media and Sport  
ARTS COUNCIL  
ENGLAND



Northumberland  
County Council



Paul Hamlyn  
Foundation

YOUTH  
MUSIC



# INEVITABLE?

Show Programme & Accessibility Information



[mortalfools.org.uk](http://mortalfools.org.uk)

"This show is a rollercoaster of emotions; you will laugh, cry and develop a real connection with each character. We want young people in the audience to remember that no one can be fully prepared for adulthood and to have fun with the characters as they figure that out."

*Ilana, Mortal Fools Ensemble Young Company Member*

This programme is designed to give you a flavour of what the *Inevitable?* show is about and introduce you to cast and characters. It will also let you know what to expect from the performance, to help you fully engage with and enjoy the experience.

You can find more accessibility information specific to each touring venue on our website:  
[www.mortalfools.org.uk/inevitable](http://www.mortalfools.org.uk/inevitable)

## AFTER THE SHOW...

- Let us know what you thought of the show on your preferred social media platform using the hashtag: [#InevitableTour](https://twitter.com/inevitabletour)
- Stay in touch with Mortal Fools and keep up to date with upcoming events, performances, and projects just like this one by signing up to our mailing list here:  
[www.mortalfools.org.uk/ mailing-list](http://www.mortalfools.org.uk/ mailing-list)

## TABLE OF CONTENTS

- [2 - About the Show](#)
- [3 - Mortal Fools Ensemble  
Young Company](#)
- [4 - Meet The Cast & Characters](#)
- [7 - Performance Information:  
What to Expect](#)
- [9 - The Creative Team](#)
- [10 - The 'Grow Up' Project](#)
- [11 - About Mortal Fools](#)



---

**THANK YOU  
FOR BOOKING  
YOUR TICKET  
TO INEVITABLE?**

# ABOUT THE SHOW: INEVITABLE?

Devised and performed by young people, showcasing an original soundtrack and bold set design – this theatre show has the incredible talent, insights and lived experience of teenagers at its heart.

You're 17. You arrive on the threshold. Some of you are fearful, some of you are hopeful, some livid, some oblivious and some raring to go. You stand amongst strangers, anticipating what comes next.

This unfiltered, funny, and thought-provoking theatre show from Mortal Fools Ensemble Young Company explores a universal part of life: becoming an adult.

This show is for teenagers, young people, parents/carers and folks that support and work with teenagers. It's an exploration of the phenomenon of growing up that is honest, hopeful, empowering and poignant.

*"Starting with the dynamic voices of Mortal Fools Ensemble Young Company, we've worked together to craft a story which captures the shared human experience of "growing up". The Inevitable? show explores some of the joys, hopes, fears, absurdity, and personal growth of that pivotal moment of turning 18 and legally becoming an adult – it's a fun, thoughtful and poignant snapshot of this moment rooted in contemporary reality of Gen Z and Gen Alpha's real-life experiences."*

**KIZ CROSBIE**  
MORTAL FOOLS CEO &  
CO-DIRECTOR OF INEVITABLE?



**SCOTT WILSON**  
CO-DIRECTOR  
ON INEVITABLE?

*"In making 'Inevitable?', we have combined our interests in theatre, music and animation to create a show that promises to be bold, exciting and new. Audiences will be invited to question what it means to "grow up" in 2024. We are really excited to take our Ensemble Young Company on tour and to share this show with audiences and youth groups."*



# MORTAL FOOLS ENSEMBLE YOUNG COMPANY

Ensemble Young Company is Mortal Fools' dedicated youth theatre group for young people aged 13—19 in Northumberland (school years 9+) who want to create and tour theatre, providing them with an experience as close to a professional process as possible!

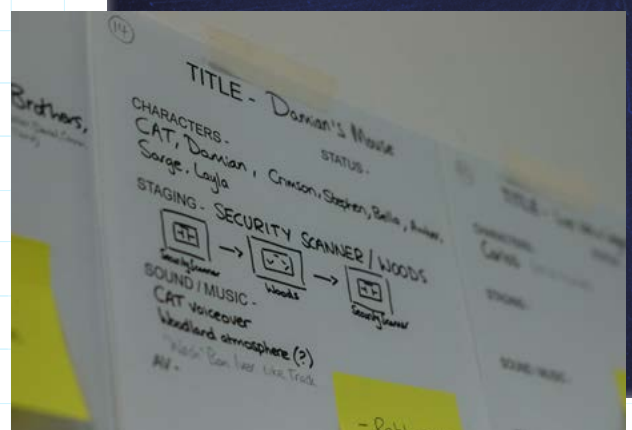
Our Ensemble Young Company make theatre through the process of co-creation, where young people and professional artists work together to contribute their ideas, skills, and opinions to create brilliant, original theatre. If you're interested in Mortal Fools co-creation process, [watch our Sparked video series](#) all about it.

The *Inevitable?* cast have worked alongside a team of professional theatre practitioners, directors, designers, and technicians to create a full production with sound, lighting, set, costumes and original music, which we are then taking on tour across the North East and North West.

Mortal Fools are the only theatre company in the North-East touring youth theatre and co-creating with young people in the way that we do.

"*Inevitable?* is great fun, supremely silly and I promise that you won't be bored. We think every audience member will see something very relatable connected to their own experience of growing up."

JACK HOUSTON  
ENSEMBLE YOUNG  
COMPANY MEMBER



# MEET THE INEVITABLE? CAST & CHARACTERS

Ensemble Young Company is made up of 11 young people from Northumberland who have been working together since Summer 2023 as part of [a wider National project – Grow Up.](#)



ALEXX  
HANCOCK

**Main Character:** Damian

**Character traits:** Introverted, adventurous and loyal

**Other Characters:** Sarge's Dad, Bella's Dad,  
general ensemble member

CAST MEMBER

CAST MEMBER  
& MORTAL  
FOOLS PEER  
FACILITATOR

**Main Character:** Hazel

**Character traits:** Self-doubting... but capable!

**Other Characters:** Layla's Mum, girly pop gang  
member, general ensemble member



AMAAYA  
TADAA

CAST MEMBER



ASH  
MORRIS

**Main Character:** Amber

**Character traits:** Psychic, thoughtful and solitary

**Other Characters:** Lola (Bella's friend), girly pop  
gang member, general ensemble member

CAST MEMBER

**Main Character:** Carlos

**Character traits:** Wise, curious, and legendary

**Other Characters:** General ensemble member



CASPIAN  
WHITE



CONNOR ROBSON

**Main Character:** Crimson  
**Character traits:** Energetic, caring and kind  
**Other Characters:** Sarge's brother, general ensemble member

CAST MEMBER & MORTAL FOOLS YOUNG VOLUNTEER

CAST MEMBER

**Main Character:** John  
**Character traits:** Sudokus, Sudokus, Sudokus  
**Other Characters:** Layla's Dad, Sarge's brother, general ensemble member



DANIEL HUNTER

CAST MEMBER & MORTAL FOOLS PEER FACILITATOR



ELOISE BARBER

**Main Character:** The Voice of CAT  
**Character traits:** Knowledgeable, obstinate, and friendly  
**Other Characters (touring venues only):** Evie, girly pop gang member, general ensemble member

Eloise will also be running workshops with our partner organisations while we're on tour, in her role as Peer Facilitator.

**Note:** CAT is AI technology

CAST MEMBER & MORTAL FOOLS YOUNG VOLUNTEER

**Main Character:** Bella  
**Character traits:** Confident, anxious and rule breaker  
**Other Characters:** Sarge's brother, Layla's sister (Sadie), general ensemble member



ILANA WHITE



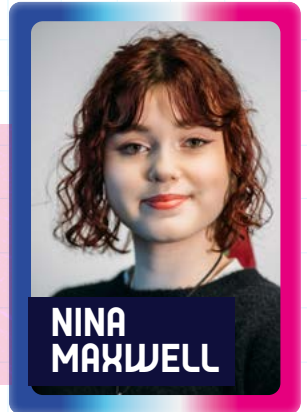
**JACK HOUSTON**

**Main Character:** The Sarge  
**Character traits:** Prepared, brave and defensive  
**Other Characters:** Toby (Club Bouncer),  
general ensemble member

**CAST MEMBER**

**CAST MEMBER**

**Main Character:** Layla  
**Character traits:** Stevie Nicks Wannabe  
**Other Characters:** Sarge's Mum, Bella's Mum,  
general ensemble member



**NINA MAXWELL**

**CAST MEMBER**



**OSCAR O'NEILL**

**Main Character:** Stephen  
**Character traits:** Introverted, regretful and tries to fit in (poorly)  
**Other Characters:** Sarge's brother, Art Critic,  
general ensemble member



**ENSEMBLE YOUNG COMPANY DURING A DEVSING SESSION**

# PERFORMANCE INFORMATION: WHAT TO EXPECT

We are providing this information for those audience members who may want to understand what the *Inevitable?* show will be like to enjoy it fully and authentically.

Mortal Fools accessibility contact is Rachel Horton. You can contact her by emailing [Rachel.Horton@mortalfools.org.uk](mailto:Rachel.Horton@mortalfools.org.uk) or calling 0191 580 1250 if you'd like to chat about the show.

## ON ARRIVAL

- You will be welcomed into your venue by Mortal Fools and venue staff.
- We will have copies of the script, wellbeing resources and a small number of fidget toys, ear plugs and ear defenders for those who need them (though we recommend you bring your own if you can).
- Team Mortal Fools staff wearing T-shirts will be on hand to support and are the people to go to if you want to chat ahead of the show or after the show.

## THE THEATRE SPACE

- Doors will open 15 minutes before the show starts. You will be greeted by Mortal Fools staff wearing Mortal Fools branded t-shirts who will welcome you into the performance space - which will be well lit with atmospheric sound. The lighting will change to signify the start of the show.
- Seating is not reserved or allocated unless specific access requirements have been flagged prior to the show. If you need an allocated seat or would like to take your seat before doors open due to an access need please get in touch via: [Rachel.Horton@mortalfools.org.uk](mailto:Rachel.Horton@mortalfools.org.uk)
- Mortal Fools' performances are as welcoming and inclusive as possible. They are less formal than traditional performance settings meaning you can leave at any time, stim, have snacks and soft drinks, go to the toilet and re-enter if you need to; we just ask you to please be aware of other audience members and our young cast (for example, try to leave as quietly as you can, and avoid very noisy food such as crisp packets).



## THE PRODUCTION AND SPECIAL EFFECTS

- There will not be any audience participation.
- Show run time is 75 — 80 mins long (approx.).
- You will see 10 or 11 young people on stage (depending which performance you are attending).
- There will be some loud and sudden sound transitions, and pre-recorded music will be played, including lyrics written and recorded by the cast.
- There will be a variety of lighting states including dim and bright lighting.
- We will be using a haze machine.
- You will see a variety of visual projections during the performance, including animation.

## CONTENT AND THEMES

- This show is for teenagers, young people, parents/carers and folks that support and work with teenagers.
- We recommend that the show is suitable **for ages 11+ and adults\***.
- It does contain scenes of **drinking alcohol**, and **some strong language\***, however this is not used in an aggressive way and is mostly for comic effect.
- The show is full of jokes and feel-good moments, but it also explores some challenging themes such as bereavement, caring responsibilities, and leaving home.

**We will have wellbeing resources available at our shows, including signposting to organisations that can offer support. We will also have staff members available on the day who are trained in Mental Health First Aid.**



**ENSEMBLE YOUNG COMPANY DURING A DEVSING SESSION**

# THE CREATIVE TEAM

## CAST & DEVISERS

Alexx Hancock  
Amaaya Tadaa  
Ash Morris  
Caspian White  
Connor Robson  
Daniel Hunter  
Eloise Barber  
Ilana White  
Jack Houston  
Nina Maxwell  
Oscar O'Neill

## DIRECTING AND WRITING TEAM:

Kiz Crosbie  
Scott Wilson  
Zoe Lamming  
Kate Jeffries

With special  
thank you to our  
Funders, Supporters  
and Partners  
who made this  
project possible:

## PRODUCTION TEAM:

Craig Spence: Production Manager & Lighting Designer  
Zoe Anderson: Project Producer  
Kamilla Jonsson: Deputy Stage Manager  
Calum Howard: Composer, Facilitator & Sound Designer  
Aileen Kelly: Production Designer  
Lily Mae Kroese: Animator  
Sheryl Jenkins: Animator  
Rachael Walsh: Dramaturgical Support & Writing Mentor

## MARKETING:

Rachel Horton: Audience Development & Accessibility  
Elinor Bryant: Marketing Assistant  
Swaddle//Creative: Graphic Designer  
Von Fox Promotions: Photography  
Statex Print: Print

## FUNDERS:

Arts Council England  
Children in Need  
Community Foundation Tyne & Wear and Northumberland  
Northumberland County Council  
Paul Hamlyn Foundation  
Youth Music

## VENUES & PARTNERS:

YMCA Northumberland  
Riding Mill Village Hall Trust  
Gosforth Civic Theatre  
Burnley Youth Theatre  
Theatre Porto

## TECHNICAL HIRE:

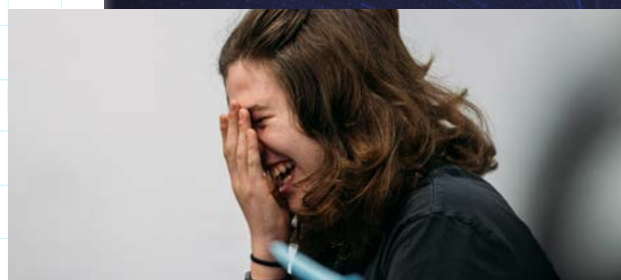
IngramAV Ltd  
Live Theatre  
Northern Stage

***Inevitable?* is part of the National Grow Up! project - created and co-led by Beyond Face, Company Three, Mortal Fools, and Prime Theatre. Headed up by Company Three, Grow Up is underpinned by the belief that youth theatre can create radical, transformative change for young people across the country.**

September 2023 saw the beginnings of four groups of young people and their practitioners, from Northumberland, Swindon, Plymouth, and London working together collaboratively, whilst devising new work.

We all started with the same starting point during the devising process and set out with the intention to create four different full-length plays. The springboard for this project and our devising process were the words 'Grow Up'. Teenagers are told to do this all the time but are rarely given any space to do so. Across the creative process, we explored what our young people think and feel about growing up in the world today.

Each company is sharing their Grow Up creative output across 2024. Each theatre show is very different - representative of young peoples' diverse lived experience - and has moments of real connection.



**CONNOR ROBSON  
ENSEMBLE YOUNG  
COMPANY MEMBER**

*"The devising process brought everyone closer together and it's been fun exploring different lived experiences of growing up. I've enjoyed working with the other theatre companies and their young people across the UK via the 'Grow Up' project - we've learnt a lot from each other."*

---

# THE GROW UP PROJECT

# ABOUT MORTAL FOOLS

Mortal Fools is a theatre, drama, and creative learning company that supports children and young people (aged 7 to 25) through impactful creative interventions and regular youth theatre groups. Our mission is to engage, enable, and empower participants, enhancing their well-being while fostering employability and emotional development.

## IF YOU LIKED INEVITABLE? YOU MIGHT LIKE:

**MORTAL FOOLS**

Available to watch now!

A positive and empowering film, co-created with young people and grounded in the reality of their lives.

figuring it out and fitting in; what makes you, you?

**flux** DIGITAL

Twelve unique young voices, come together on stage, to explore what it means to question your identity in a world that feels determined to put you in a box.

To watch visit:  
[mortalfools.org.uk/fluxdigital](http://mortalfools.org.uk/fluxdigital)

ARTS COUNCIL ENGLAND | Community Foundation | phf Paul Hamlyn Foundation | MONEY | The Joicey Trust | Northumberland County Council

## KEEP IN TOUCH

Sign up to Mortal Fools mailing list to find out about future events and creative happenings for young people via:

[www.mortalfools.org.uk/mailing-list](http://www.mortalfools.org.uk/mailing-list)

By attending our show Inevitable? you are enabling the creation of high-quality professional, contemporary theatre made by young people for young people. Our productions explore the realities of the world we are living in now, from the perspective of the young people we work with - inviting positive change.

All the money earned through ticket sales and donations goes directly back into our Mortal Fools Youth Theatre groups – so thank you! And if you'd like to donate a little more, we will have donation station at the event, and you can also donate by following the link: [www.mortalfools.org.uk/donations](http://www.mortalfools.org.uk/donations)

## FUNDERS:



[www.mortalfools.org.uk](http://www.mortalfools.org.uk)